

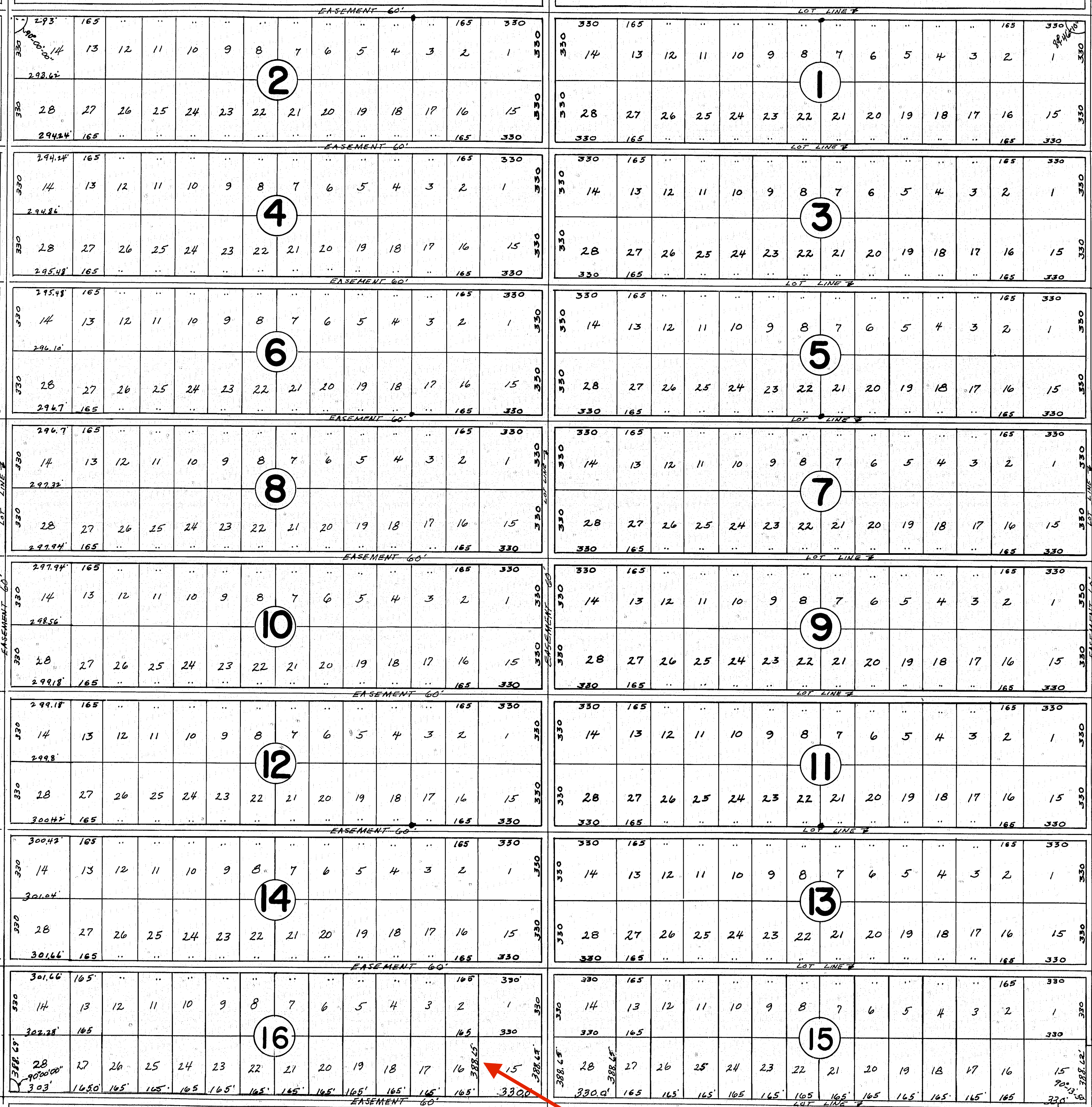
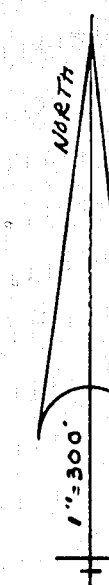
# UNIVERSITY HIGHLANDS

SECTION 29, TOWNSHIP 16 SOUTH, RANGE 31 EAST

25-70

SHEET NO. 6 OF 18 SHEETS.  
SEE SHEET NO. 1 FOR DESCRIPTIONS.  
AND DEDICATION. ALL LOT DIMENSIONS  
ARE TO CENTER OF EASEMENTS.

*William F. Smith*  
FLA. REG. SURVEYOR #417



Easement 30  
Feet south of Lot  
runs West to East

1.35 Acre Lot  
Location